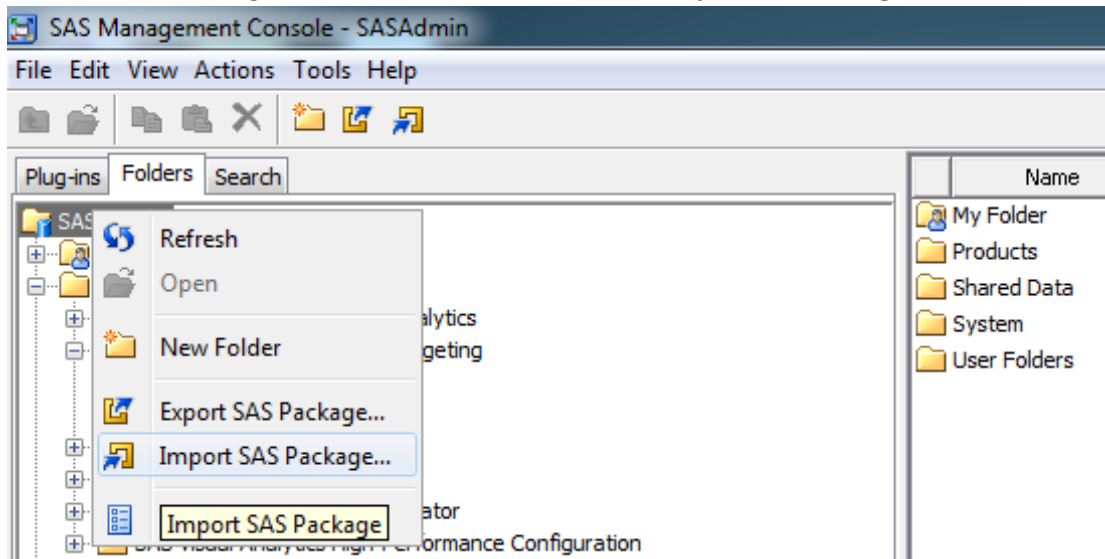


CXT Hotfix Post Install Instructions

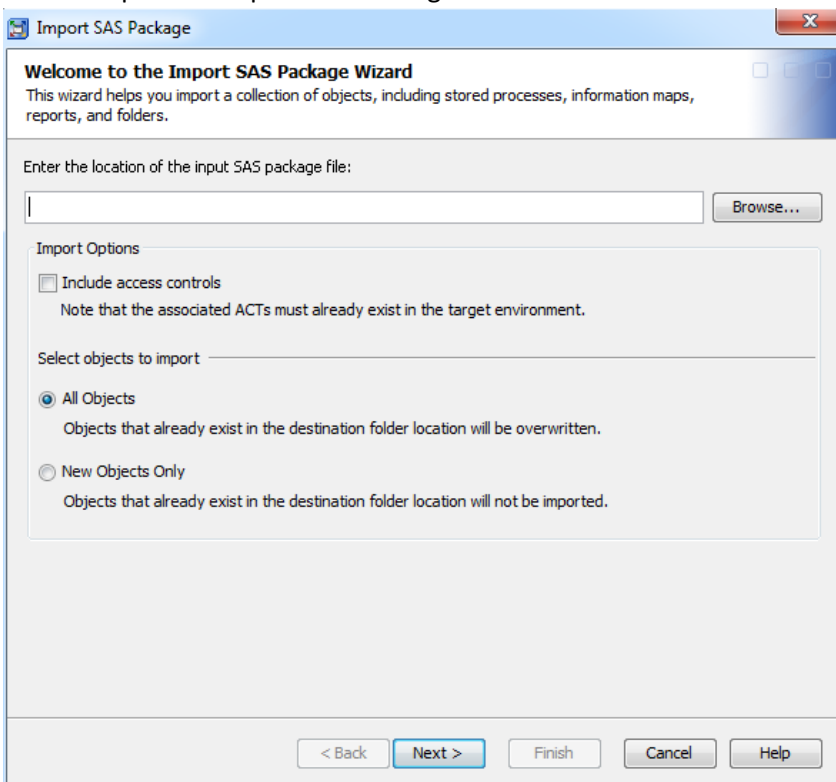
Perform the following steps to import the two packages in the given sequence.

Steps to import the updated transformation package

1. Login to SAS Management Console using SAS Administrator user.
2. Go to **Folders** tab, Right click on **SAS Folders** and select **Import SAS Package...**



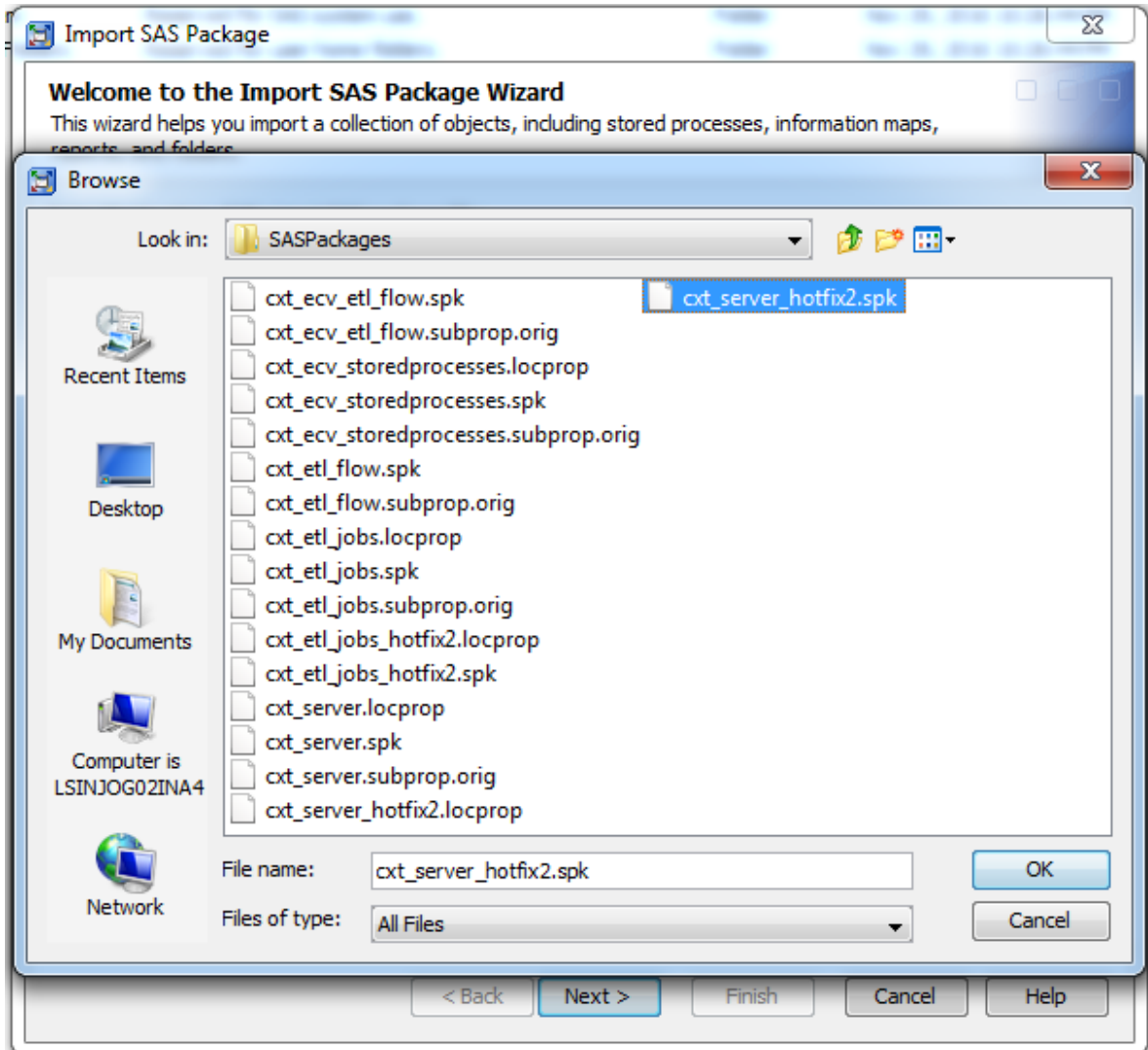
This will open the Import SAS Package Wizard.



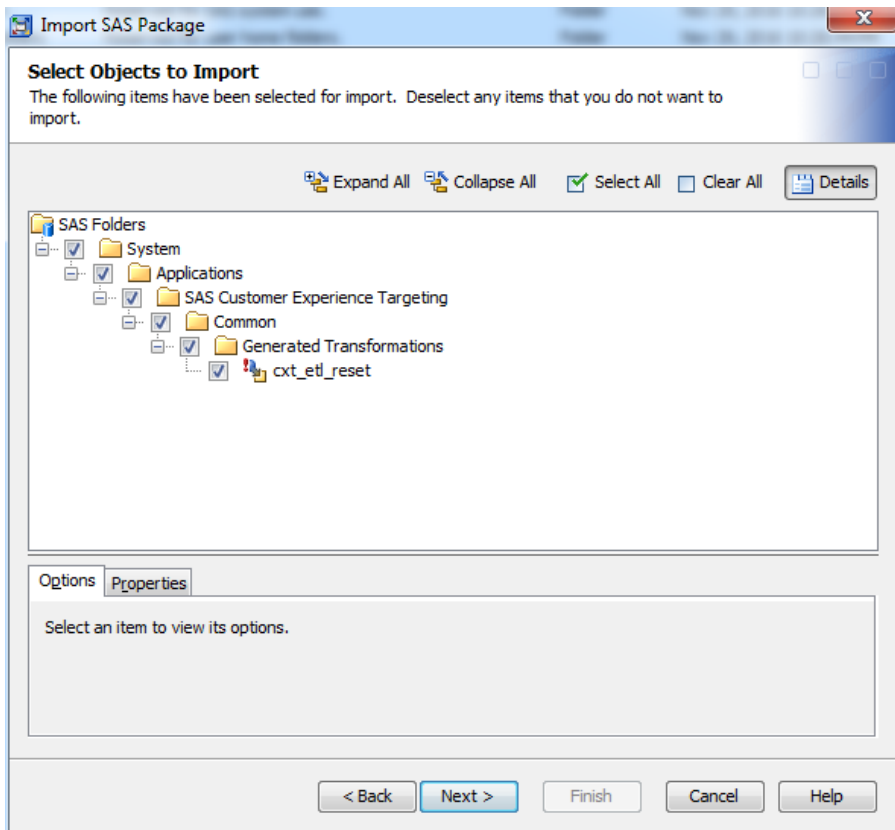
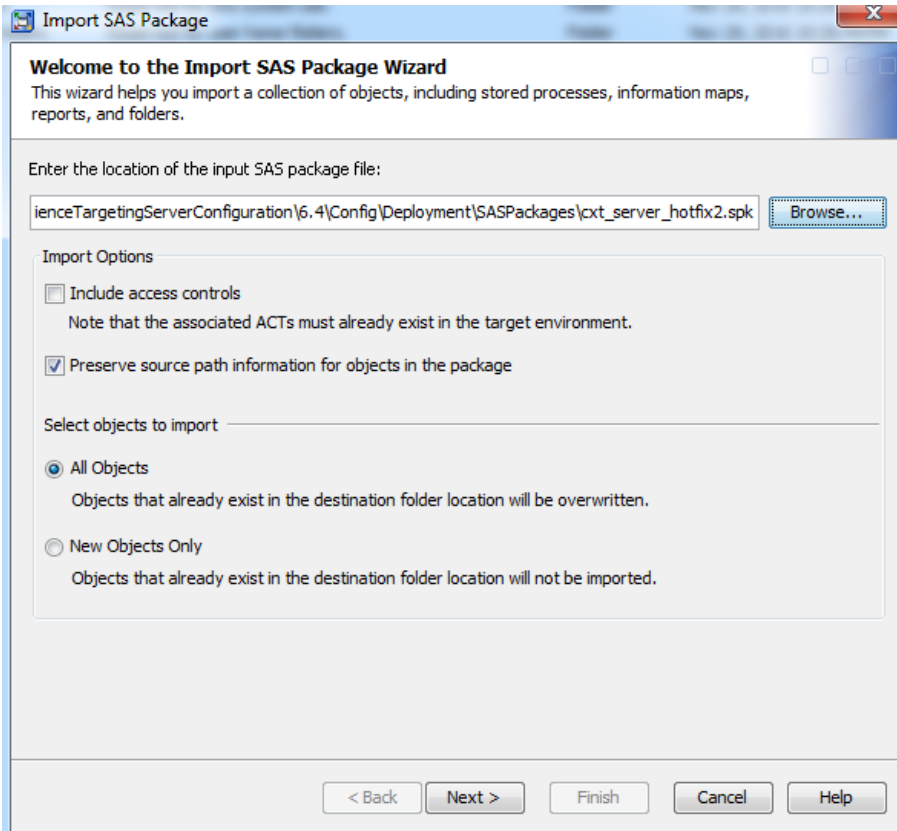
3. On the Import SAS Package Wizard, click on the Browse button and select **cxt_server_hotfix2.spk** file. Click OK.

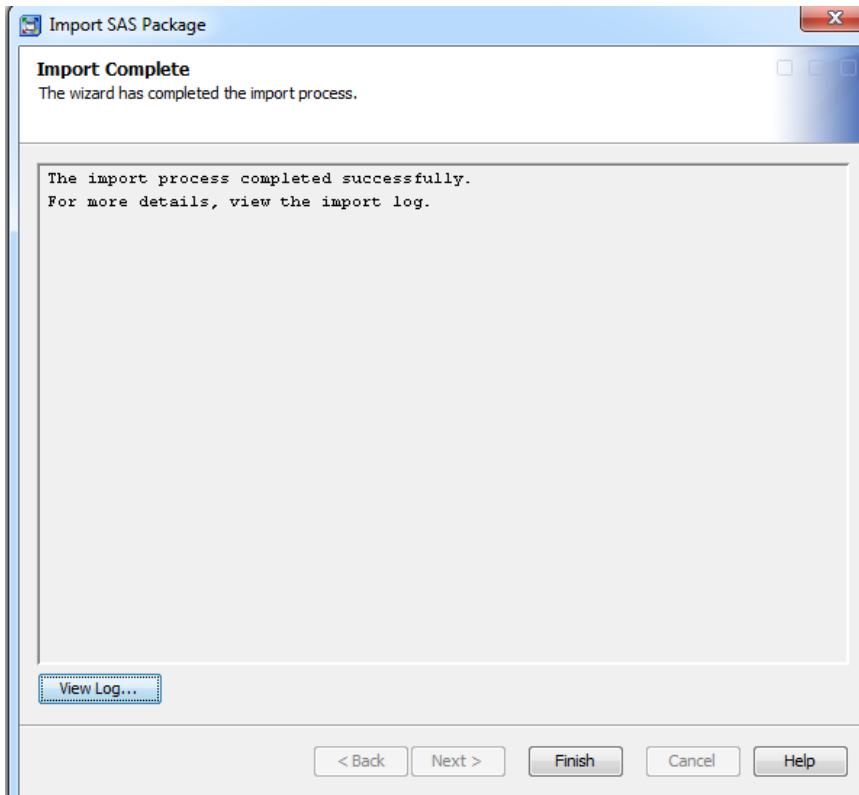
Package path

Windows... \SASHome\SASCustomerExperienceTargetingServerConfiguration\6.4\Config\Deployment\SASPackages\
Unix –



4. Click on Next and follow the import process.

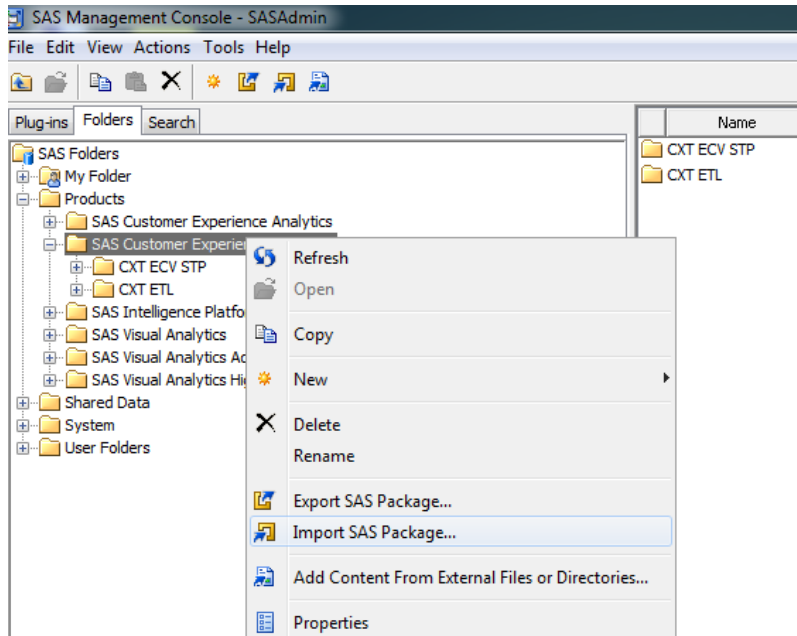




5. Verify the import process is successful. Click on Finish.

Steps to import the package

1. Login to SAS Management Console using SAS Administrator user.
2. Go to **Folders** tab, Right click on **SAS Customer Experience Targeting** folder and select **Import SAS Package...**

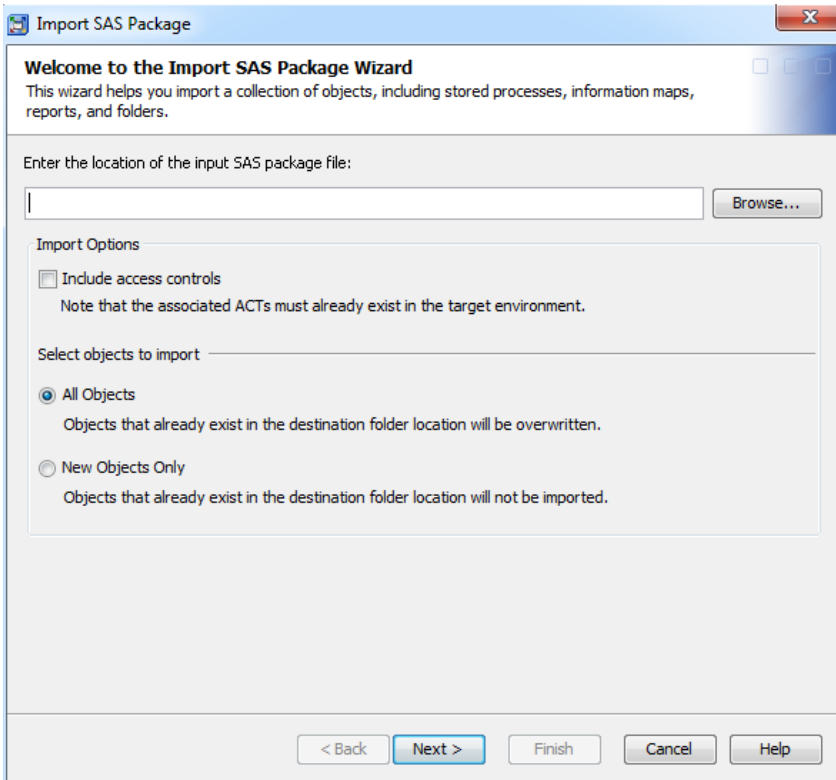


This will open the Import SAS Package Wizard.

3. On the Import SAS Package Wizard, click on the Browse button and select **cxt_etl_jobs_hotfix2.spk** file. Click OK.

Package path

Windows... \SASHome\SASCustomerExperienceTargetingServerConfiguration\6.4\Config\Deployment\SASPackages\
Unix -

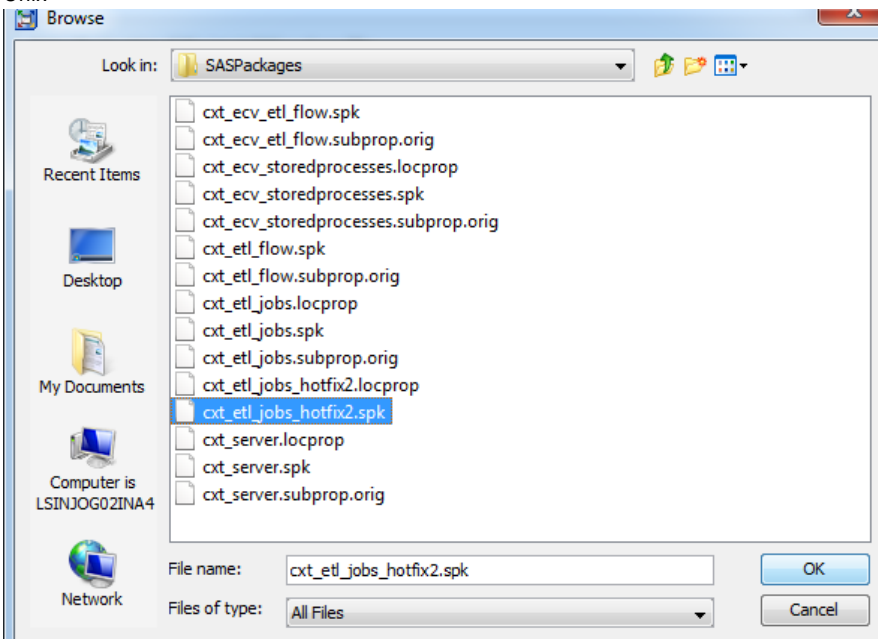


4. On the Import SAS Package Wizard, click on the Browse button and select **cxt_etl_jobs_hotfix2.spk** file. Click OK.

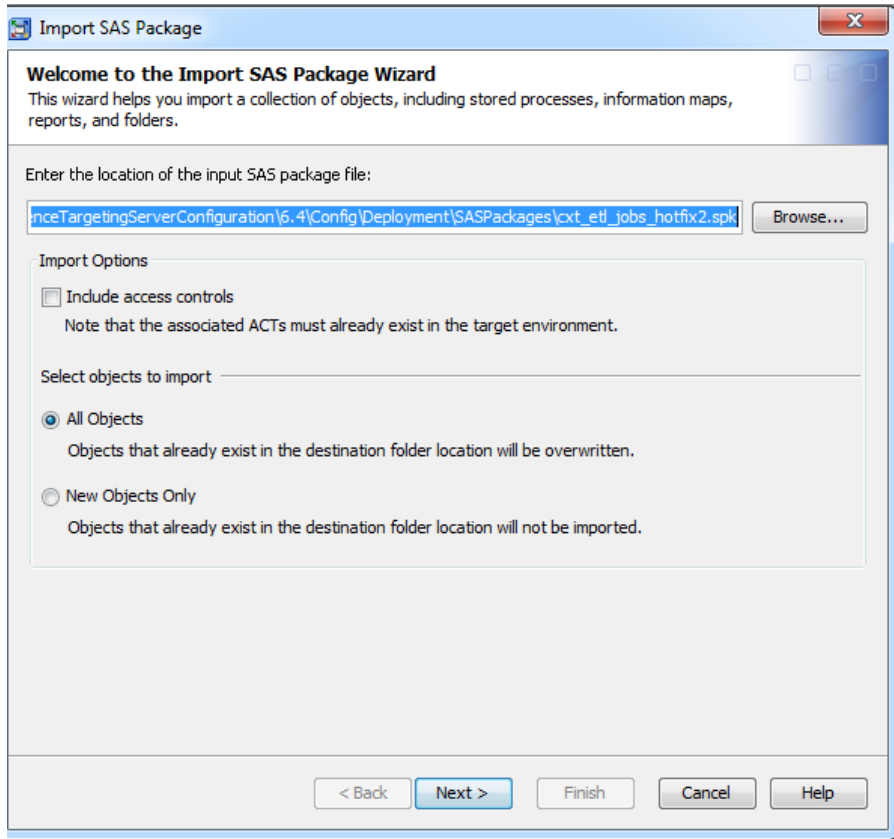
Package path

Windows...\SASHome\SASCustomerExperienceTargetingServerConfiguration\6.4\Config\Deployment\SASPackages\

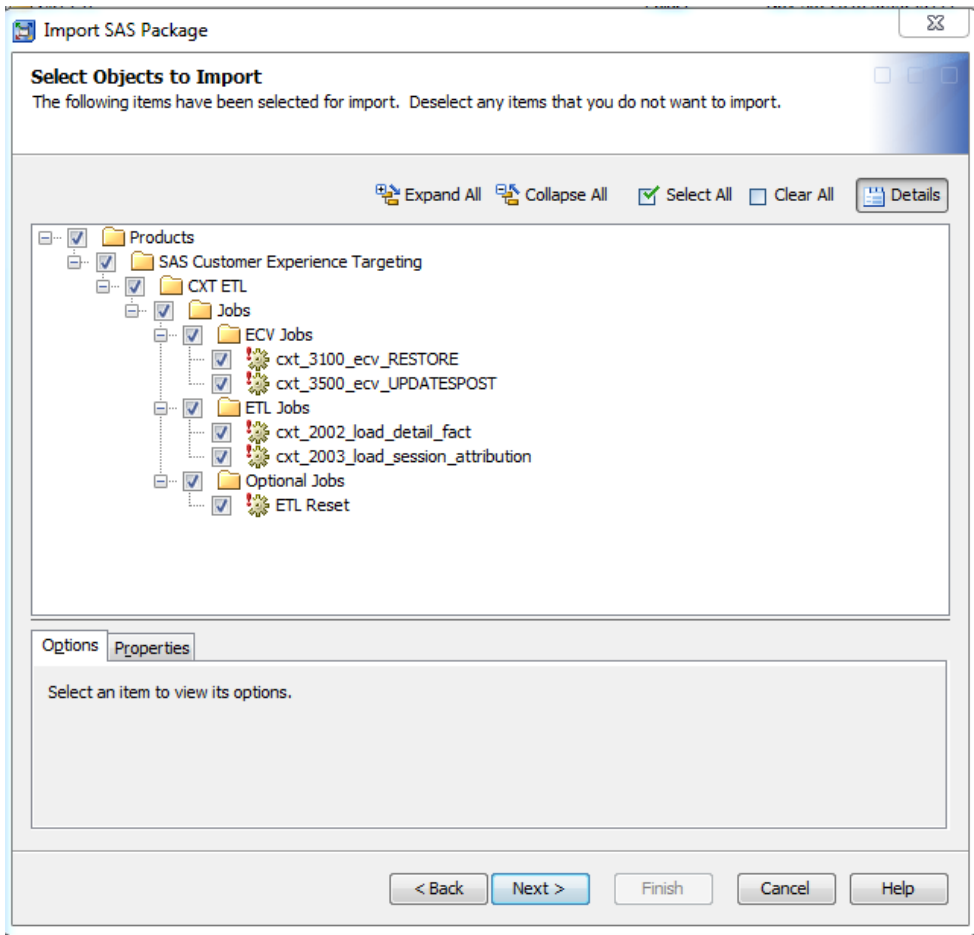
Unix -



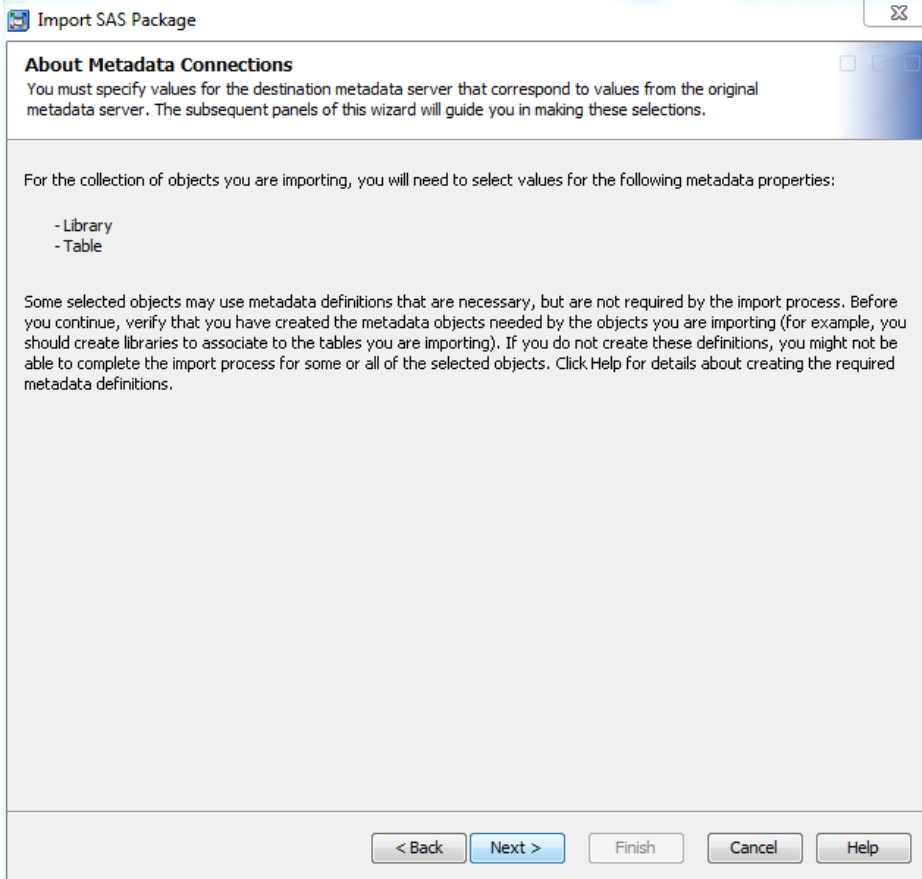
5. Click on Next and follow the import process.



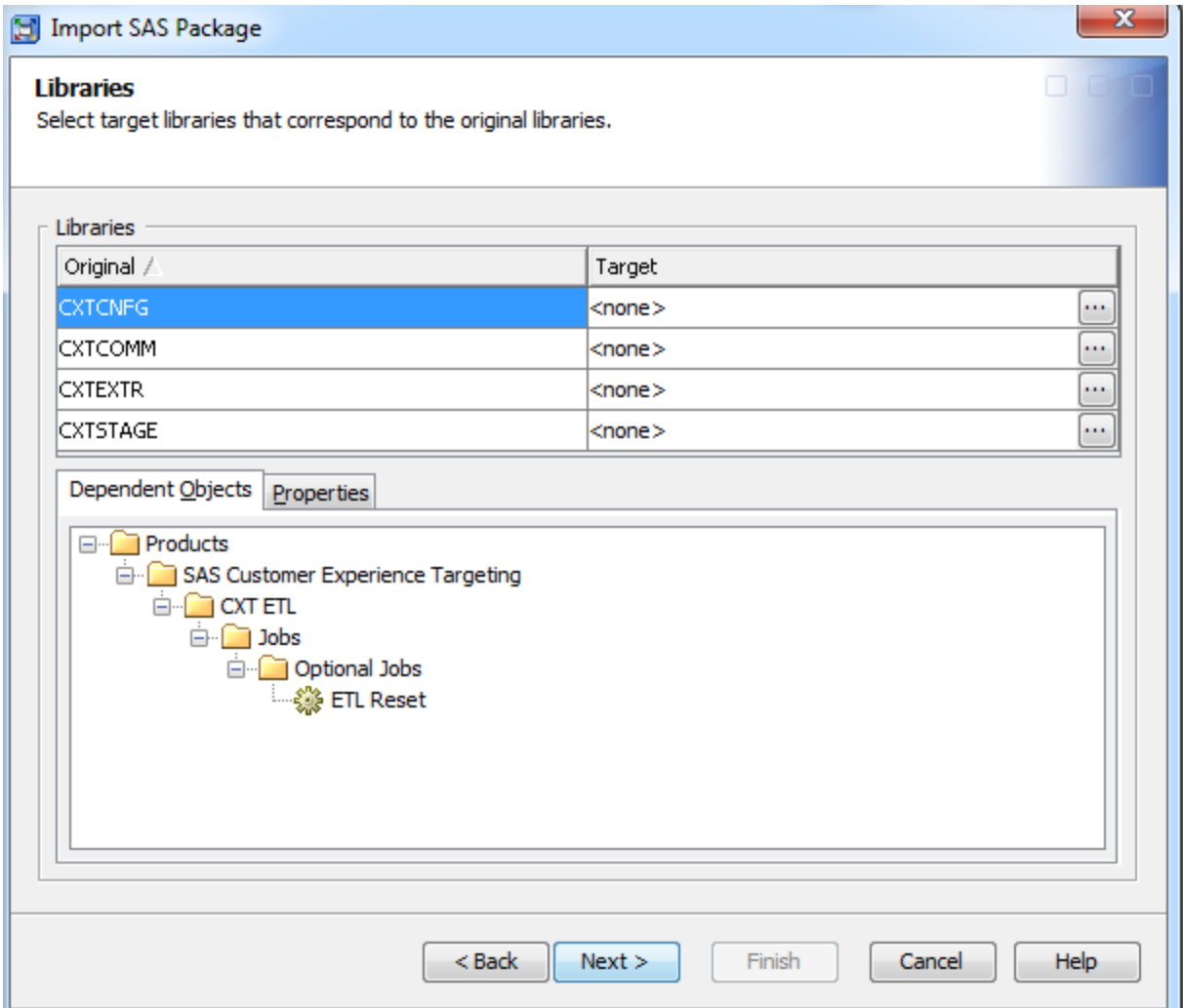
Click Next



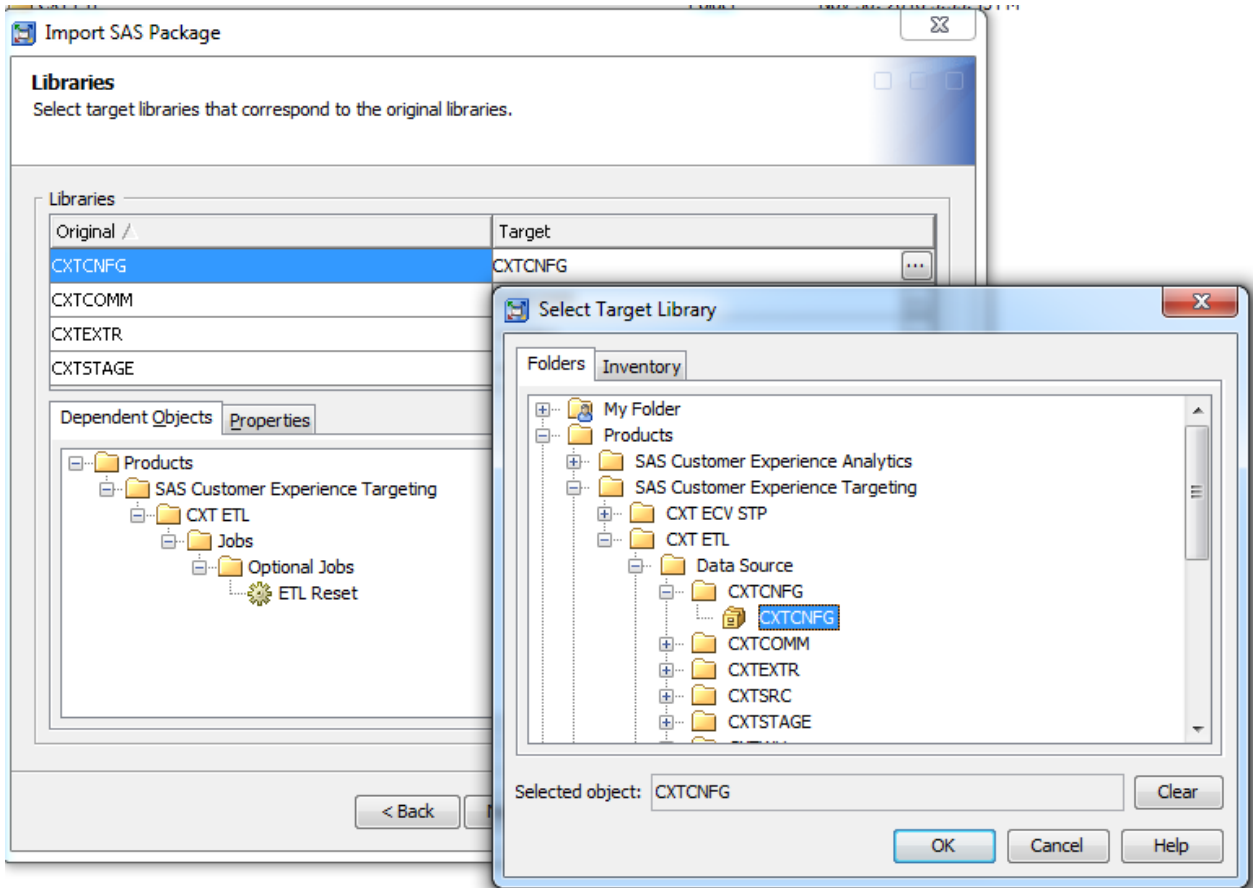
Click Next



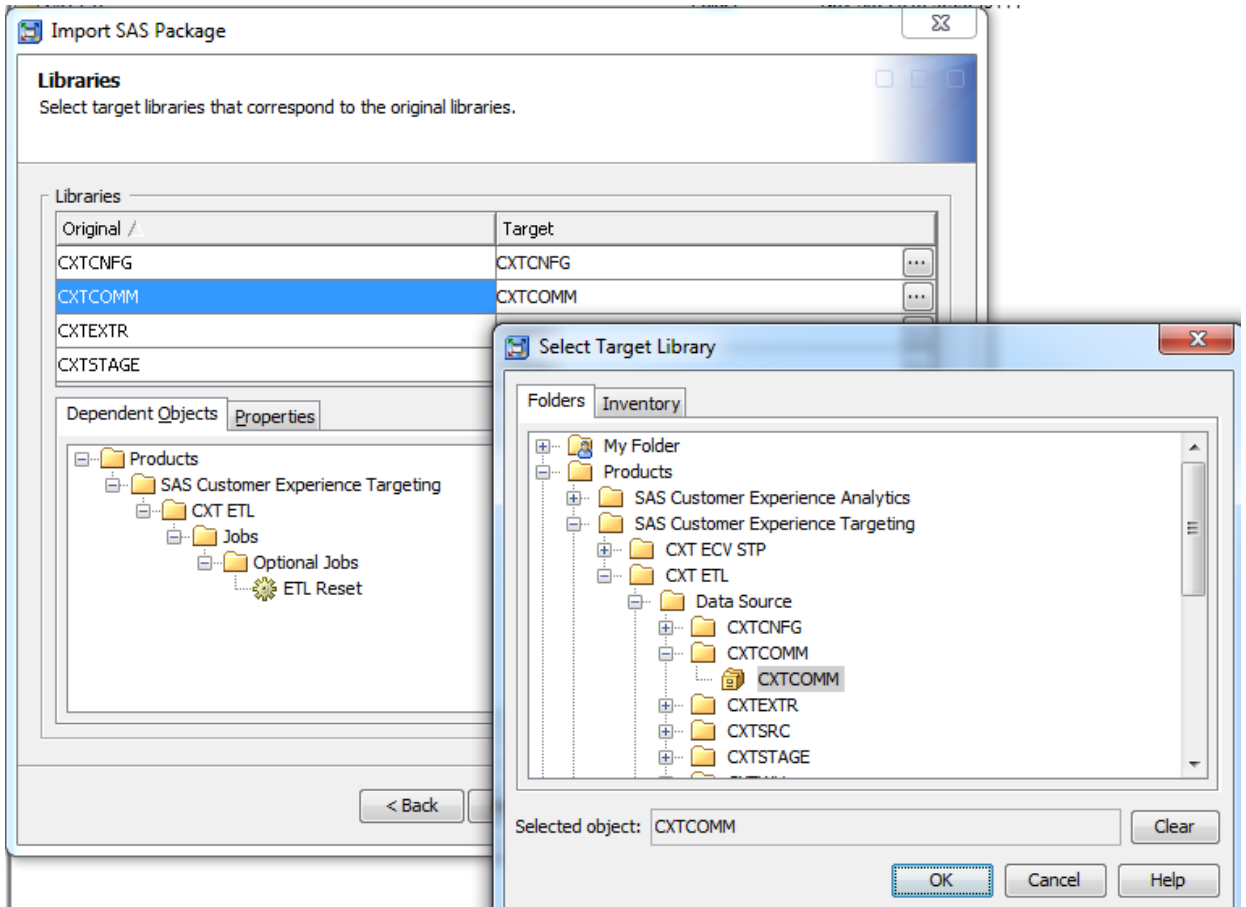
Click Next



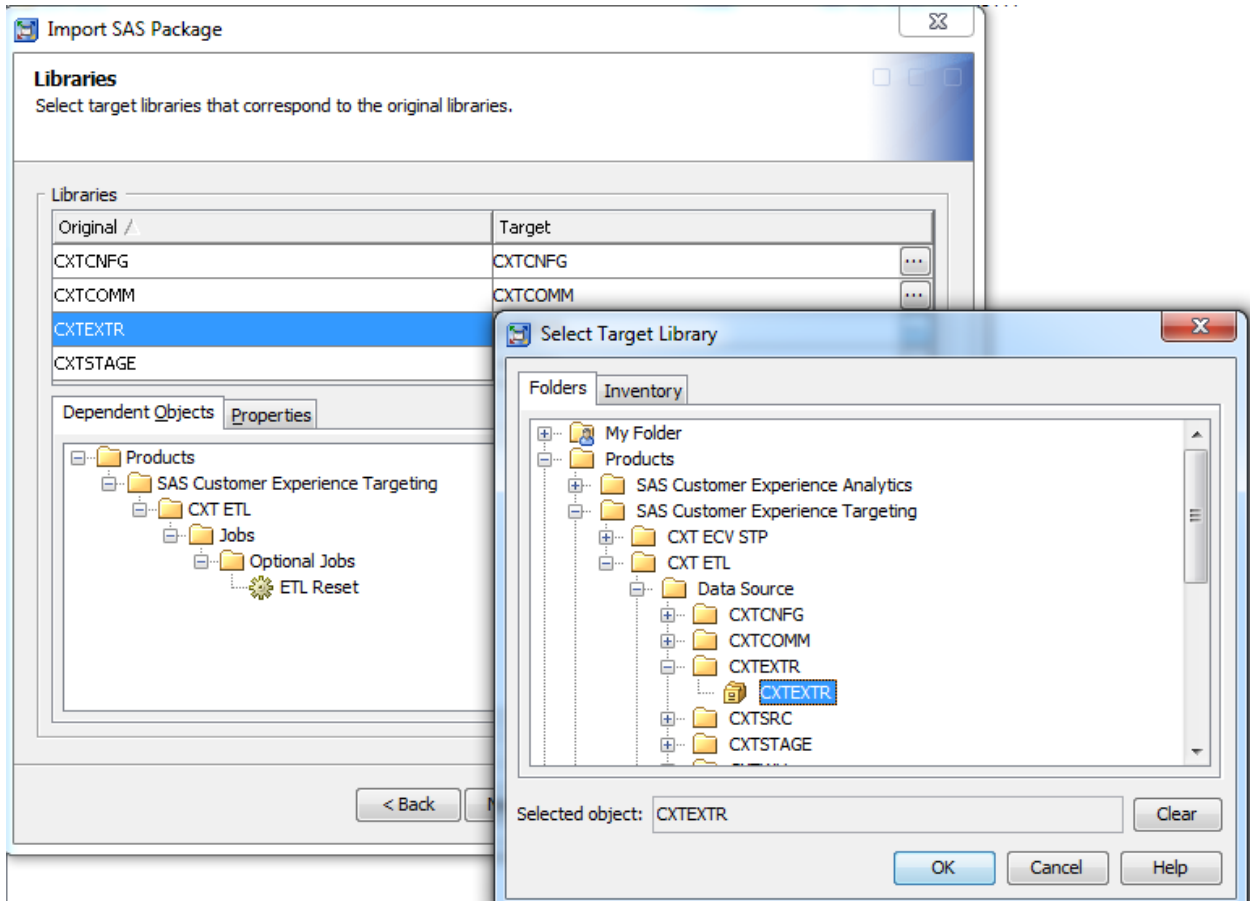
Do the library mappings



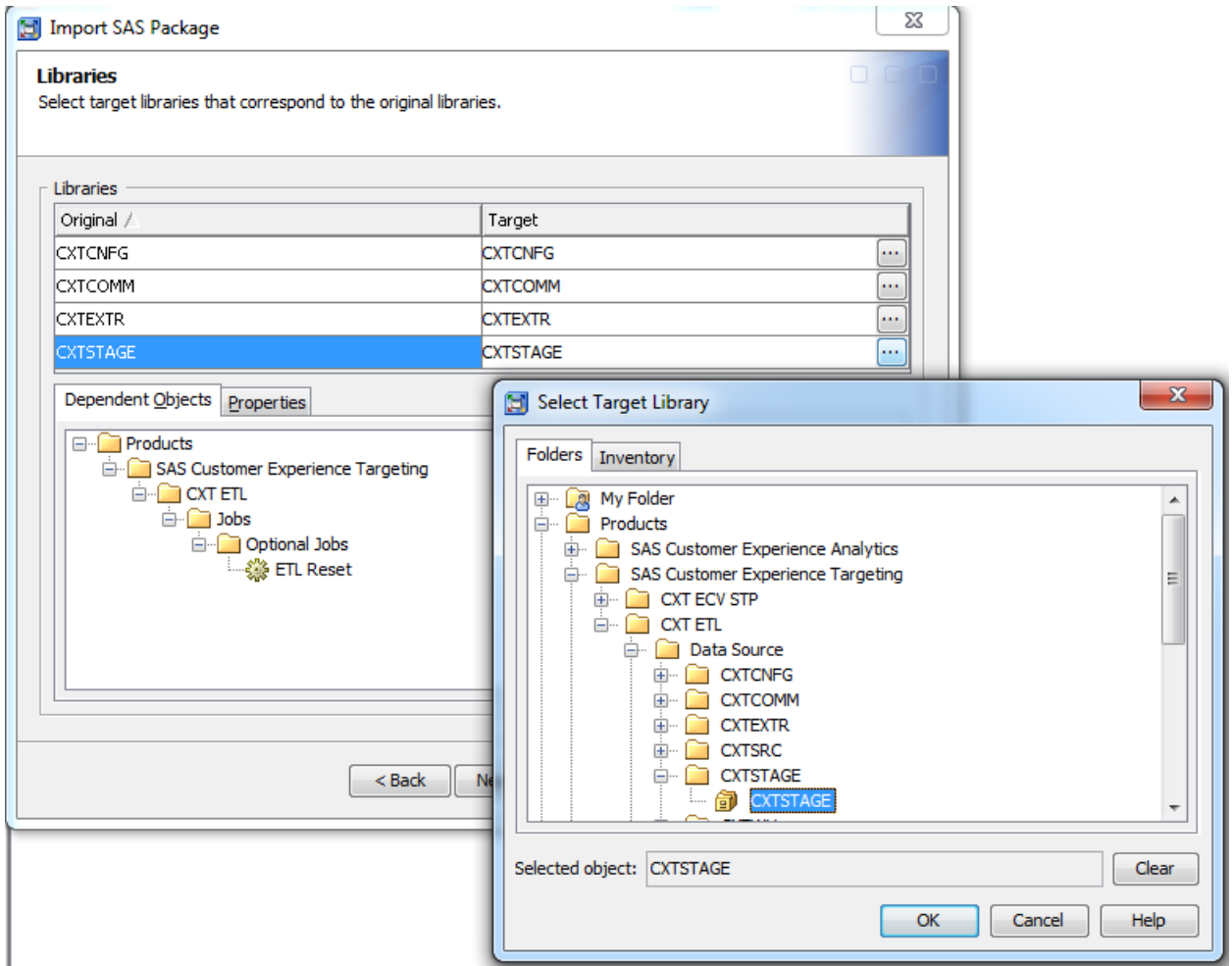
Map target CXTCNFG library.



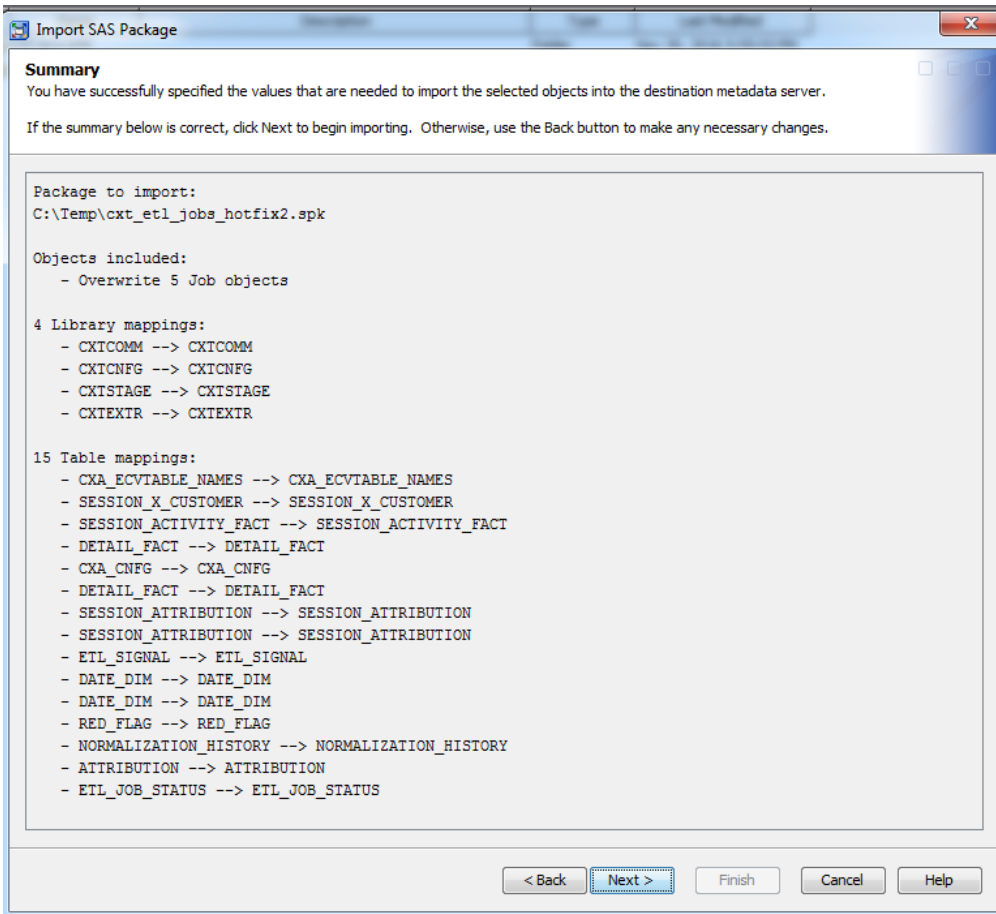
Map target CXTCOMM library.



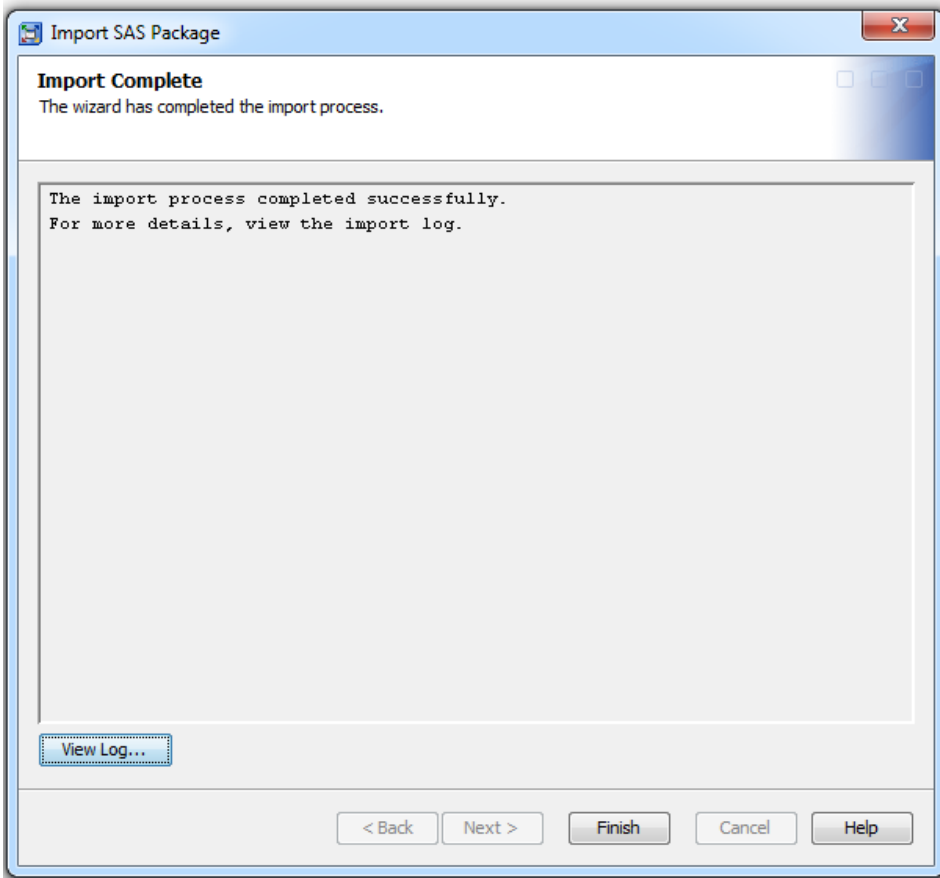
Map target CXTEXTR library.



Map target CXTSTATE library.



Click Next



6. Verify the import process is successful. Click on Finish.
7. Redeploy jobs.